

BURNDY CATALOG NUMBER	CABLE DATA						FIG.	STUD SIZE	"C" DIA.		"K" DIA.		N		T		Z MIN.	J DIA. MIN.	W DIA. MAX.	L MAX.	COLOR OF INSULATION SLEEVE	COLOR OF SUPPORT BUSHING	STRIP LENGTH	MAX. WEIGHT IN GRAMS	INSTALLATION TOOLING		
	SIZE	STRAND-ING	MAX. CONDUCT DIA.	INS. DIA. RANGE		MAX.			MIN.	MAX.	MIN.	MAX.	MIN.	MAX.	MIN.	HAND POWERED TOOLS									CRIMP DIES FOR TFM MACHINE	CRIMP DIE INSERT FOR SME MACHINE	
				MIN.	MAX.																						
YAE22-G13YW	#26	SOLID	.0164	.024	.038		1	4-6	.265	.235	.152	.142	.135	.115							AMBER	YELLOW	.21	.53	RATCHET: M8ND WITH N14HET-25V1 DIE	N/A	N/A
YAE22-G15YW	#26	SOLID	.0164	.024	.038		1	8-10	.330	.300	.203	.193	.167	.147							AMBER	YELLOW	.21	.58			
YAE22-G16GN							3	4	.190	.170	.122	.112	.135	.115	.027	.023								.50			
YAE22-G18GN	#22	(19X34)	.033	.040	.054		1	2	.165	.135	.099	.089	.085	.065										.47			
YAE22-G13GN							1	4-6	.265	.235	.152	.142	.135	.115										.53			
YAE22-G15GN	#24	(19X39)	.026				1	8-10	.330	.300	.203	.193	.167	.147										.58			
YAE18-N2GN							1	1/4	.458	.448	.282	.262	.246	.206										1.28			
YAE18-N3GN	#22	(19X34)	.033	.040	.054		1	5/16	.458	.448	.338	.318	.246	.206	.035	.029		.055	.039					1.22			
YAE18-N15GN							1	3/8	.533	.523	.400	.380	.284	.244										1.24			
YAE18-G28GN							1	13/32	.533	.523	.431	.411	.284	.244										1.18			
YAE22-G18							2	2	.165	.135	.099	.089	.085	.065	.027	.023								.44			
YAE22-G13				.049	.103		2	4-6	.265	.235	.152	.142	.135	.115							AMBER	NONE	.21	.50			
YAE22-G15							2	8-10	.330	.300	.203	.193	.167	.147										.55			
YAE18-N2YW	#20	(19X32)	.041				1	1/4	.458	.448	.282	.262	.246	.206										1.28			
YAE18-N3YW				.047	.062		1	5/16	.458	.448	.338	.318	.246	.206	.035	.029		.063	.046		RED	YELLOW		1.22			
YAE18-N15YW							1	3/8	.533	.523	.400	.380	.284	.244										1.24			
YAE18-G28YW							1	13/32	.533	.523	.431	.411	.284	.244										1.18			
YAE18-N7BK							3	4	.190	.170	.122	.112	.145	.105										.85			
YAE18-G43BK							1	4-6	.255	.245	.151	.141	.145	.105										.90			
YAE18-N1BK							1	6-8	.317	.307	.178	.168	.176	.136										.97			
YAE18-NBK	#18	(19X30)	.051	.057	.073		1	8-10	.317	.307	.203	.193	.176	.136	.035	.029		.074	.056		RED	BLACK		.93			
YAE18-N2BK							1	1/4	.458	.448	.282	.262	.246	.206										1.28			
YAE18-N3BK							1	5/16	.458	.448	.338	.318	.246	.206										1.22			
YAE18-N15BK							1	3/8	.533	.523	.400	.380	.284	.244										1.24			
YAE18-G28BK							1	13/32	.533	.523	.431	.411	.284	.244										1.18			
YAE18-G43							2	4-6	.255	.245	.151	.141	.145	.105										.87			
YAE18-N1	#16	(19X29)	.058	.065	.125		2	6-8	.317	.307	.178	.168	.176	.136										.94			
YAE18-N							2	8-10	.317	.307	.203	.193	.176	.136	.035	.029		.125	.070		RED	NONE		.90			
YAE18-N2							2	1/4	.458	.448	.282	.262	.246	.206										1.25			
YAE18-N3							2	5/16	.458	.448	.338	.318	.246	.206										1.19			
YAE18-N15							2	3/8	.533	.523	.400	.380	.284	.244										1.21			
YAE18-N7							3	4	.190	.170	.122	.112	.145	.105										.85			
YAE14-N43							2	4-6	.255	.245	.152	.142	.145	.105										.95			
YAE14-N1	#14	(19X27)	.073	.089	.155		2	6-8	.317	.307	.178	.168	.176	.136	.035	.029		.156	.088		BLUE	NONE		1.10			
YAE14-N							2	8-10	.317	.307	.203	.193	.176	.136										1.06			
YAE14-N2							2	1/4	.458	.448	.278	.268	.246	.206										1.36			
YAE14-N3							2	5/16	.458	.448	.338	.318	.246	.206										1.27			
YAE14-N4							2	3/8	.533	.523	.400	.380	.284	.244										1.38			

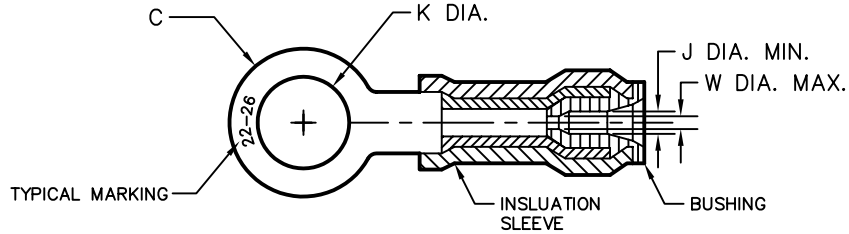


FIG. 1

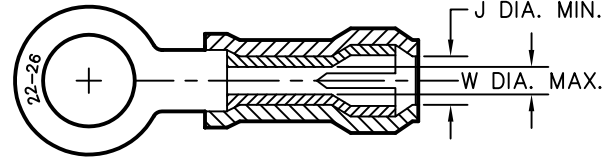


FIG. 2

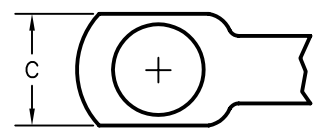


FIG. 3

NOTES:

- 1. MATERIAL: SLEEVES & BUSHINGS - NYLON
TERMINAL - COPPER
- 2. FINISH TO BE TIN PLATED PER MIL-T-10727; TYPE I
300 MICRO INCH MINIMUM THICKNESS.
- 3. ANY CHANGE ON THIS DRAWING WILL AFFECT
DRAWING WSD68722.

M8ND HANDTOOL INSTALLATION DIE IS N14HET25-V1.

TO ORDER BURNDY® PRODUCTS CALL UNITED STATES: 1-800-346-4175 (LONDONDERRY, NH) CANADA: 1-800-361-6975 (QUEBEC) 1-800-387-6487 (ALL OTHER PROVINCES) FOR PRODUCT INFO-		INSULUG™ FOR THIN WALL INSULATED CABLE	
		ITEM NO: N/A	CAT NO: YAE-- (SEE TABLE)
SCALE: NTS		DRAWING NO	
DRAWN BY: -- 05/15/70		REV	
CHECKER: SFP 05/15/70		SD068964-01	
DSN APPVL: MB 05/15/70		SHEET 1 of 1	
MFG APPVL: N/A		SIZE	
QC APPVL: D. VARIO 08/22/95		D	
MKT APPVL: C. CHADBOURNE 08/22/95		REL LEVEL: AutoCAD	

SUPERSEDES: SD68265
REF. WSD68722

REV.	DATE	DESCRIPTION	ECO	BY	C'K'D.
B	02/04/09	ADD "INSTALLATION TOOLING" COLUMN.	17448	RB	PW